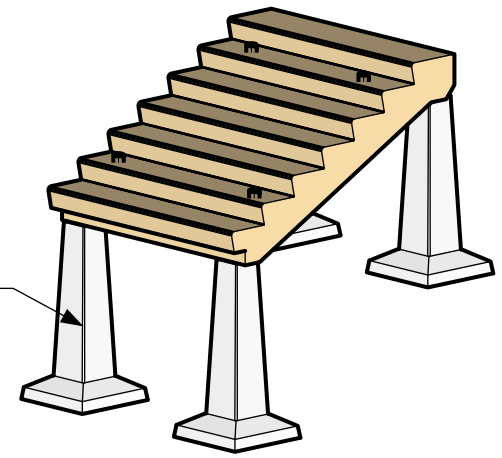


4' - 12'  
(In 1' Increments)

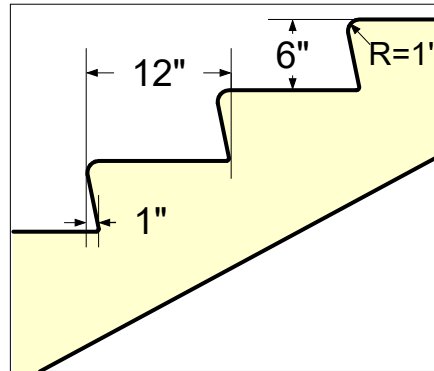
Top View

3/4" Lifting Insert - 4 (Typ)  
(To be patched in field by others)



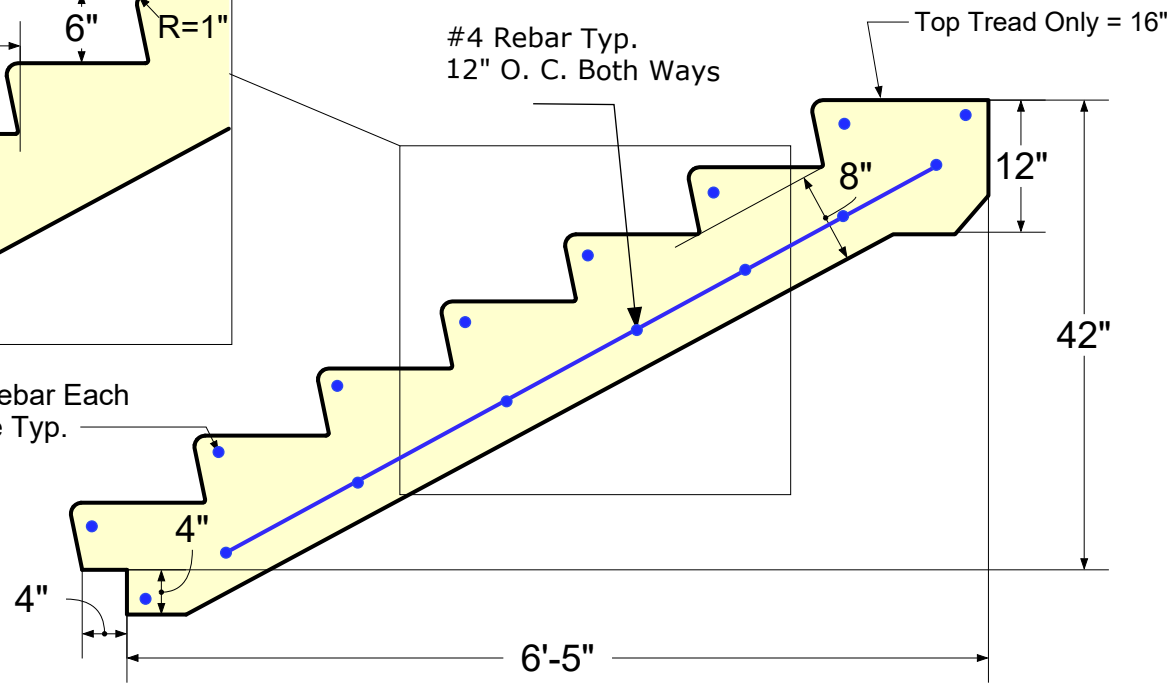
Precast Piers  
(Optional)

Iso View



#4 Rebar Each  
Nose Typ.

#4 Rebar Typ.  
12" O. C. Both Ways



Side View

**Notes:**

Casting Method: Wet Cast  
5000 Psi concrete at 28 days  
Non Slip surface on Treads  
All Steps to have a 1% min,  
Positive Pitch In Field

Step Weight = Width x 1005 lb.

Ex: 10' wide = 10' x 1005 = 10,050lb.

**ATLAS CONCRETE PRODUCTS**

www.AtlasConcrete.com

65 Burrirt St.

New Britain CT 06053

800-774-1112

860-224-2244

860-224-2255 Fax



7 Rise Custom Banking Step

Available in widths  
from 4' wide to 12' wide